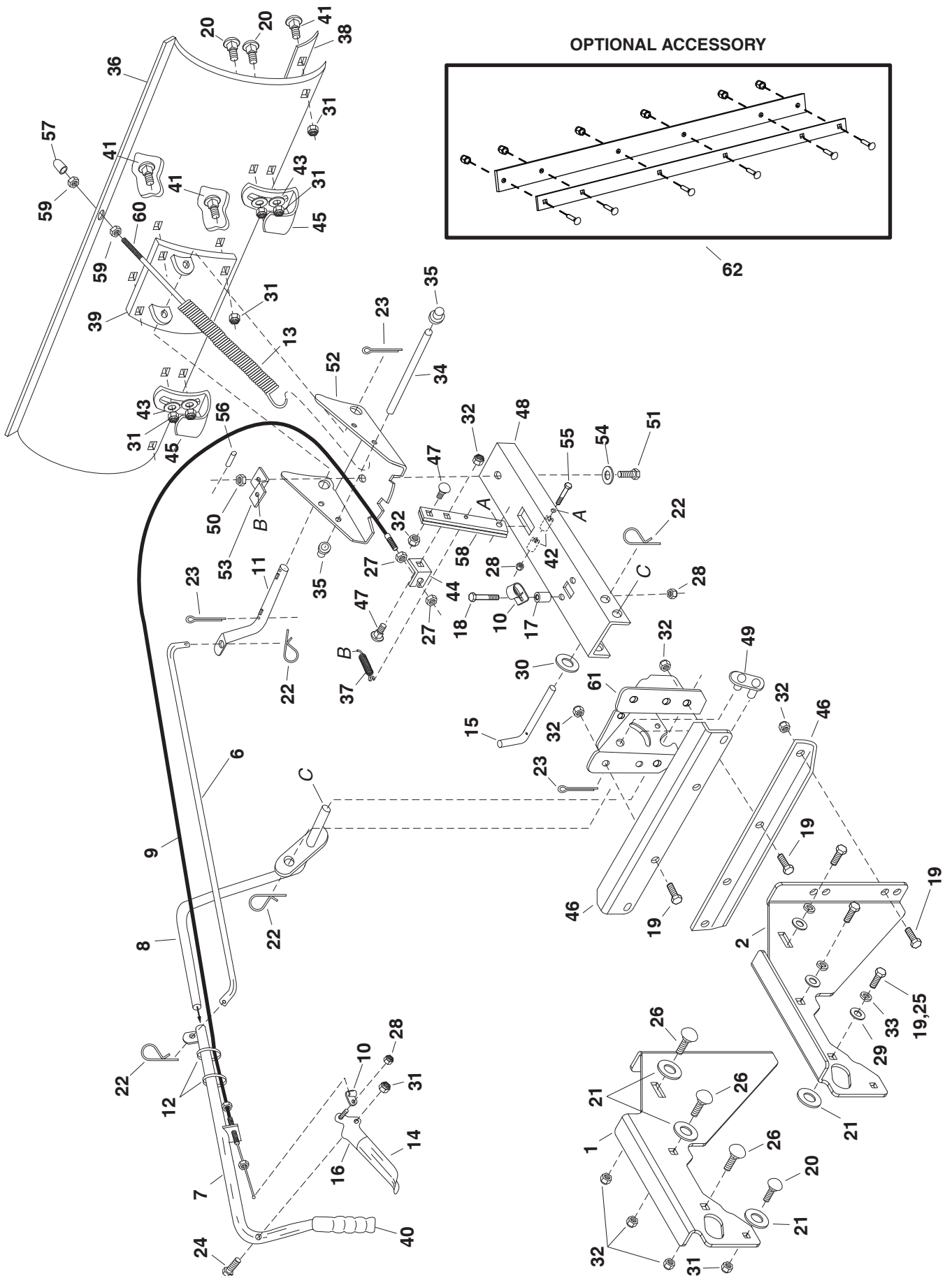


REPAIR PARTS FOR MODEL 45-0429-669 - 48" SNOW BLADE



REPAIR PARTS LIST FOR MODEL 45-0429-669 - 48" SNOW BLADE

REF. NO.	PART NO.	QTY.	DESCRIPTION	REF. NO.	PART NO.	QTY.	DESCRIPTION
1	25645	1	Hanger Bracket, L.H.	33	43003	6	Lock Washer 3/8"
2	25646	1	Hanger Bracket, R.H.	34	23856	1	Spring Mount Rod
3	—	-	Mounting Bracket (Pre-assembled)	35	44917	2	Palnut, 3/8"
4	—	-	Blade Channel (Pre-assembled)	36	23955	1	Blade 48"
5	—	-	Blade (Pre-assembled)	37	43348	1	Angle Lock Spring
6	46049	1	Rod, Blade Pivot	38	23956	1	Wear Plate 48"
7	65519	1	Lift Handle Tube Assembly	39	62980	1	Reinforcement Plate Assembly
8	63033	1	Lift Handle Rod Assembly	40	46471	1	Handle, Grip
9	49808	1	Control Cable Assembly	41	43080	6	Bolt, Carriage 5/16-18 x 3/4"
10	746-0260	2	Cable End Fitting	42	46053	2	Spacer, .28 ID x 1"
11	46066	1	Shaft, Blade Pivot	43	43081	4	Washer, 5/16"
12	726-0178	2	Plastic Tie	44	05762	1	Cable Mount Bracket
13	R9466R	1	Spring, Blade Adjust	45	24690	2	Skid Shoe
14	731-0869	1	Grip, Plastic	46	25647	2	Bracket, Angle Support
15	46065	1	Channel Pivot Pin	47	710-0305	2	Carriage Bolt, 3/8-16 x 1-1/4"
16	62561	1	Release Grip Assembly	48	24347	1	Push Channel
17	23658	1	Spacer	49	63034	1	Lift Link Assembly
18	43648	1	Hex Bolt, 1/4-20 x 1-1/2"	50	43262	1	Hex Lock Nut, 1/2-13 Thread
19	43001	14	Hex Bolt, 3/8-16 x 1"	51	23131	1	Bolt, Special Pivot
20	44326	6	Bolt, Carriage 5/16-18 x 1"	52	23958	1	Plate, Pivot 7 Ga.
21	R19172410	6	Washer, 1/2" (Large)	53	23130	1	Bracket, Spring Mt.
22	43055	4	Pin, Hairpin Small 3/32"	54	1540-118	1	Washer, Flat 1/2"
23	43010	3	Cotter Pin 1/8" x 1-1/4"	55	46071	1	Hex Bolt, 1/4-20 x 3-1/4" Lg. Gr 5
24	43085	1	Hex Bolt, 5/16-18 x 1-1/2"	56	43349	1	1/4" x 1" Spring Pin
25	47631	6	Hex Bolt, 3/8" x 1" (Thd. Forming)	57	44074	1	Plastic Cap
26	43350	6	Carriage Bolt, 3/8-16 x 1"	58	23151	2	Angle Lock Bar
27	712-0256	2	Hex Jam Nut, 5/16-24 Thread	59	43015	2	Hex Nut, 3/8-16 Thread
28	47189	3	Nylock Hex Nut, 1/4"	60	44071	1	Hex Bolt, 3/8-16 x 3-1/2"
29	43070	6	Washer, 3/8" STD.	61	24023	1	Pivot Support Bracket
30	R19171616	1	Washer	62	66754	1	Rubber Blade Kit (not included)
31	47810	13	Nylock Nut, 5/16-18 Thread		40430	1	Owners Manual
32	HA21362	16	Nylock Hex Nut, 3/8"				